

MENTAL HEALTH/CRISIS

Center for Health Care Services Crisis Line

* Serving adults and children—available 24 hours a day 7 days a week223-7233

Clarity Child Guidance Center.....616-0300

Laurel Ridge491-9400

NIX Specialty Center579-3800

San Antonio Behavioral Health.....541-5300

Suicide Hotline (available 24 hours/7days) 1-800-316-9241

Texas Youth Hotline (available 24 hours) 1-800-210-2278

MENTAL HEALTH/COUNSELING

Baptist Child & Family Services/STAR.....832-5000

Centro Med Family Resource Center.....927-1816

Clarity Child Guidance Center616-0300

Family Services Association.....299-2400

Jewish Family Service.....302-6920

OLLU Counseling and Community Services434-1054

Roy Maas Youth Alternatives Counseling and Family Resources Center (option #3).....340-8077

OPTICAL/EYE GLASSES

Prevent Blindness.....220-2360

Lion's Club.....225-1164

I Care of SA (at Haven for Hope)220-2370

University of Incarnate Word Eye Clinic283-6800

TEXAS HOMELESS EDUCATION

.....512-475-9702

TRANSPORTATION

VIA Route Information.....362-2020

Presa Community Center532-5295
(Medical transport for seniors and disabled \$10)



(WIC) WOMEN, INFANTS &

CHILDREN NUTRITION PROGRAM

Marbach Clinic.....645-4480



SERVICES FOR FAMILIES WITH CHILDREN

RECEIVING SPECIAL EDUCATION

SERVICES

Alamo Service Connection477-3275

Any Baby Can227-0170

ARC of San Antonio490-4300

Autism Community Network435-1000

AACOG Alamo Local Authority832-5020

C.L.A.S.S. Interest List (DADS) 1-877-438-5658

Children's Association for Maximum Potential

(known as C.A.M.P)671-5411

Morgan's Wonderland495-5888

Social Security Administration.....1-800-772-1213

Transportation for Medical Appointments.....647-7433
.....(toll call) 1-877-633-8747

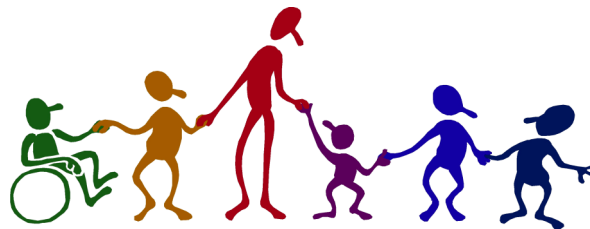
YOUR TEXAS BENEFITS
(includes: Medicaid, CHIP, Food Stamp, Food Pantry in your area, TANF, emergency evacuation assistance, and more)

Dial 211

or

1-877-541-7905

or visit the website:
www.yourtexasbenefit.com



Social Work
Department



HOTLINES

Alcoholics Anonymous.....828-6235
American Red Cross..... 224-5151..... 1-800-775-6803
Battered Women's Shelter.....733-8810
Center for Health Care Services Crisis Line223-7233
Child & Elder Abuse.....1-800-252-5400
Narcotics Anonymous434-0665
Rape Crisis Center 349-7273
United Way Help Line 211.....227-4357
Safe Alternatives1-800-DONT CUT
Emergency Police/Fire/ EMS 911 (non-emergency 207-7273)



ALCOHOL/DRUG ABUSE

Alateen/Al-Anon.....829-1392
Palmer Drug Program.....227-2634
S.A. Council on Drug and Alcohol Abuse.....225-4741

BEREAVEMENT

Angel Away, Santa Rosa.....704-2181
Children's Bereavement Center of South Tex.....736-4847
Center for Infant & Child Loss227-0530

CHILD/ADULT ABUSE

ChildSafe,675-9000
Texas Abuse Hotline.....1-800-252-5400

CHILD CARE ASSISTANCE

Child Care Delivery Services (CCDS)206-5200
Family Service Resource & Referral.....657-6278
Parent Child Inc. (PCI).....226-6232

CHILD SUPPORT DIVISION, TEXAS

ATTORNEY GENERAL'S OFFICE

408 Bushick.....333-6011

LEGAL ASSISTANCE

Texas Rio Grande Legal Aid.. 212-37001-800-369-0356
St. Mary's Center for Legal and Social Justice..... 431-2596
Community Law Center271-9595
Texas Family Legal Law1-800-777-3247
Texas Sexual Assault and Stalking Legal ...1-888-296-7233

IMMIGRATION

Citizen-Immigration Services.....1-800-375-5283
Catholic Charities-433-3256 x 203
St. Mary's Center for Legal & Social Justice431-2596
R.A.I.C.E.S.....226-7722
Deportation & Removal.....967-7012

COMMUNITY CENTERS/YOUTH PROGRAMS

Millers Pond.....623-2900
Presa Community Center.....532-5295
Say Si, San Antonio Say Yes.....212-8666
(recruit September, January, and May)

DISASTER ASSISTANCE

American Red Cross 224-5151

Salvation Army 352-2020

DOMESTIC VIOLENCE ASSISTANCE

Family Justice Center
.....208-6800
Family Violence Prevention Services930-3669
Family Violence Prevention Svcs/Battered Women's
Shelter/Paloma de la Paz733-8810
Victims Advocacy Crisis Line, S.A. Police.....207-2141



ELDERLY SERVICES

Texas Dept. of Human Resources for Aged & Disabled
.....438-6208
Christian Senior Services-Meals on Wheel.....735-5115

EMERGENCY ASSISTANCE **(Clothing, Food, Util.)**

Child Care Services and Utility Assistance
.....207-7830
Christian Assistance Ministries.....223-6648
Bexar Co. Dept. of Community Resources335-6770
Divine Providence Catholic Church.....623-3970
SA Food Bank.....337-3663
Windsong Christian Center622-3376



DAY CENTERS FOR HOMELESS

Travis Park Church.....226-8341

EMERGENCY ASSISTANCE - Shelter

Children's Shelter of S.A212-2510
Youth Alternatives Bridge Shelter for Teens.....340-7933

Salvation Army Shelter for Women &
Children.....352-2020

Transitional Housing Programs.....979-6188

National Runaway Switchboard...1-800-786-2929

Safe Alternatives.....1-800-366-8288

Suicide Lifeline1-800-784-2433



FINANCIAL LITERACY/SUPPORT

Guadalupe Avenida Association, Inc.....223-3151
Presa Community Center.....532-5295
Individual Development Account.....207-5914

HOUSING ASSISTANCE

Bexar County Housing Authority.....225-0071
San Antonio Housing Authority.....477-6262

JOB SEARCH ASSISTANCE

Workforce Solutions Alamo 7008 Marbach.....436-0670

MEDICAL / INSURANCE ASSISTANCE

Medicaid/CHIP-Children's Health
.....365-5250
Insurance.....365-5250
Care Link-University Health System.....358-3350
Partnership for Prescription Assistance.....1-800-762-4636
MARKETPLACE CALL CENTER (24 HOURS / 7 DAYS)
OBAMA CARE1-800-318-2596

MEDICAL ASSISTANCE

NurseLink-UHS(24 hour Medical Help Line).....358-3000

MEDICAL/DENTAL/IMMUNIZATIONS CLINICS

UHS CLINIC AT SOUTHWEST ISD644-7752

UHS GENERAL INFORMACION.....644-8600

Centro Med Clinic/Palo Alto.....928-4900

IMMUNIZATION CLINIC (CITY OF SA) 1226 NW 18th
.....207-8894